

MISSOURI LIONS EYE RESEARCH FOUNDATION

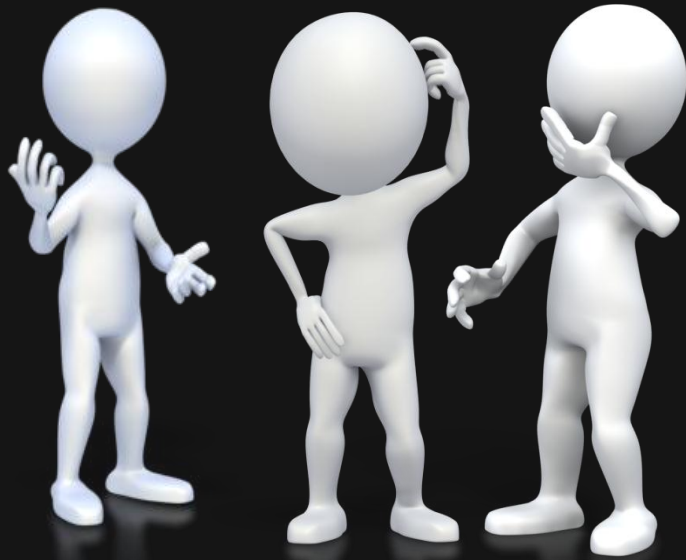
Vision Screening Program

Tamara Gonzalez-Oberbeck RN M.Ed

Vision Screening Program Manager



What is the Vision Screening Program?



Children's Vision Screening Program

Helping to prevent amblyopia by early detection of refractive errors, strabismus, cataracts, muscle and nerve problems.

Educating the public about risk factors and eye problems.

Promoting eye safety and eye care.



Children's Vision Screening Program

The Plus Optix hand-held auto-refractor helps technicians to detect:

Nearsightedness

Anisometropia

Anisocoria

Possible Cataract or Strabismus

Farsightedness

Astigmatism


Gaze Deviation



Children's Vision Screening Program

Trained vision screening technicians efficiently and effectively screen children from age 6 months on up with the Plus Optix vision screener.

Results are instant, allowing us to tell the parent at that moment if they should follow up with a complete eye exam by an eye care specialist.



Printing the results of the screening along with a photo of the eyes which is taken to the eye care specialist has increased follow up.

Feed back from the eye care specialist has shown that our PlusOptix screenings are 98% accurate.



With equipment in tow, our dedicated technicians travel throughout Missouri conducting screenings at:

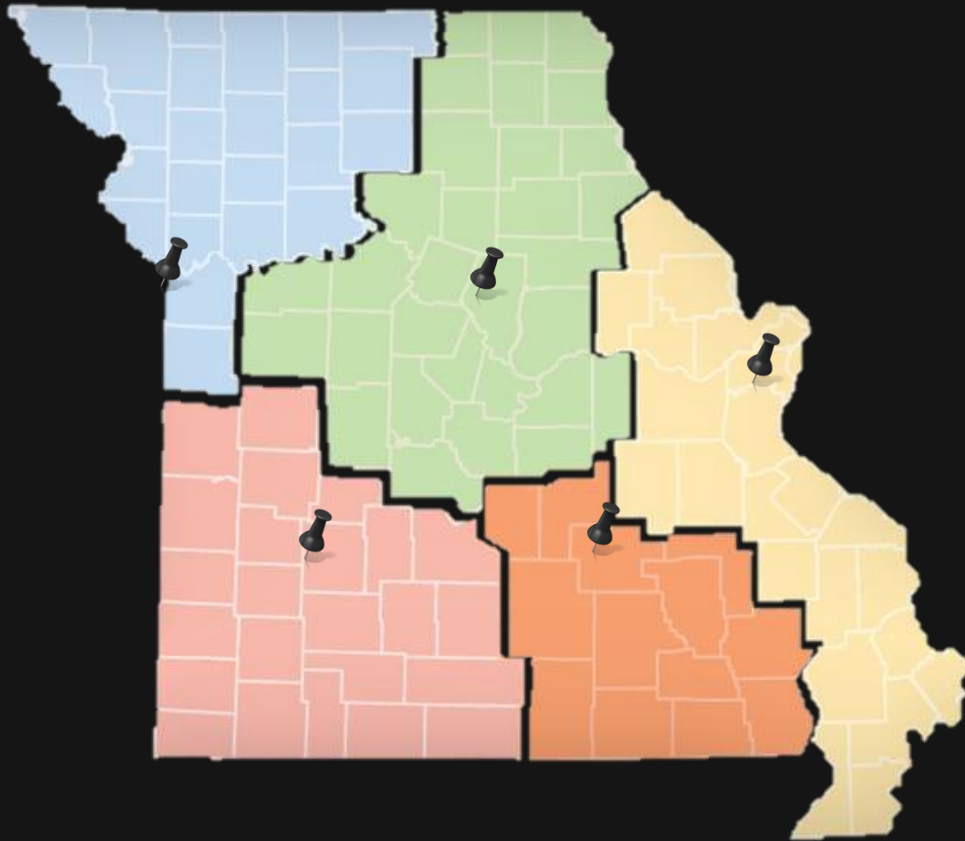
- Schools
- Day Cares
- Senior Centers
- Public Events



Seven Lions Districts



Districts are split between 6 technicians



Kansas City:
Sarah Greco

Columbia:
Malinda Crouch
Jennifer Gallihugh

St. Louis:
Angela Bell

Salem:
Laura Yohai

Springfield:
Charlee Newton

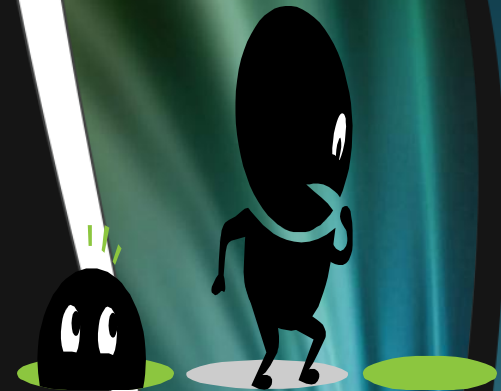
Finding the children!

Each of the 6 screening technicians has a territory.

Each technician is responsible for contacting day cares, Head Start Programs, schools in each county in their territory.

Ways we make contacts:

- Word of mouth
- Buy a listing of approved day cares from the state
- Contact Head Start Directors through a listing given to us by the state
- Internet Yellow pages of Day Cares
- Churches listed in Yellow Pages
- Home School Associations
- Drive by Listings



Follow-Up Program

To help improve the efficiency and effectiveness of the program, we follow-up with all children who are referred.

We have a full time vision screening specialist who follows up to make sure the children who are referred are getting the help they need.

Referrals

Each child who **DOES NOT** pass the Plusoptix vision screening, receives a printout of the results, with the photo of the eyes **and** a letter from us is attached explaining how important it is to follow up with an exam by an eye care specialist.

We do not give recommendations for specific eye care specialist.

We do include information about eye care assistance if they can not afford the exam.

We include a questionnaire with a self addressed, stamped envelope that the eye care specialist fills out with information about his/her results and recommended treatment.

What the Eye Care Specialist are saying:

- This screening was dead on – the child had almost the exact refractive errors as was listed on the results sent.
- Thank you for referring this child, I am amazed at all you were able to pick up.
- After referring this child for anisocoria I sent them to a neuro-ophthalmologist who is having the child under go an MRI to rule out a brain tumor – thank you for picking this up.

History

1995: Introduced a pilot vision screening program with a few MTI cameras and one technician.

1998: A LCIF Core 4 grant allowed the foundation to purchase a MTI camera for each of the 14 Lions districts. We had 17 MTI cameras at one time .

2008: MLERF began testing the Plusoptix vision screener. We began with 3 Plusoptix screeners and 3 employed screeners. The results were so impressive that we expanded and today:

2011: 7 Plusoptix vision screeners and 7 paid technicians and screened close to 40,000 children last year.

Advantages

Instant results – this is very helpful at health fairs where the parents are told on the spot if there is a potential problem. In addition we can tell them if it appears that the problems is a refractive error, the eyes are not working together, in the case of anisocoria we advised the parents to see their Dr. immediately.

Do not need a completely dark room.

Do not need a quiet room

Very quick – easy to focus on the eyes.

Easy to test as young as 6 months old

Recently screened over 400 children in 5 hours **WITH** the help of 5 Lion volunteers and used two vision screeners.



The Vision Screening Program has helped save many children from a lifetime of vision loss.

Don't just take our word for it.

The following are statements are from families whose children have participated in our vision screening program.

“Thank you very much; we would have not caught this condition if he did not have an eye screening through your program.”

“I greatly appreciate it because it helped us detect problems early.”

“The Vision-screening was head-on accurate. I didn't know my son needed glasses until the screening and the eye doctor confirmed it.”

“I just want to thank you. We saw no signs of a vision problem nor did his teachers. He hits a baseball, reads, catches, etc. I am just thankful that we caught it early so we can help him now and not when it’s too late. I highly recommend all preschool students do it. I wish my 10 yr old would have had this test. We are going to take him to the eye doc. now.”

“Thank you very much; we would have not caught this condition if he did not have an eye screening through your program.”

“I’m very thankful for your screening. I would not have known my daughter could potentially have a vision issue if not for your screenings. Thank you!”

“We are very thankful that this screening was performed; otherwise we might have not caught our child’s vision issue until much later. Then it may have been too late. Thank you so much and hope for the continued screening for all children.”

“Thank you very much; we would have not caught this condition if he did not have an eye screening through your program.”



Vision Screening Program

Early detection means
early treatment and early
treatment can help
eliminate, limit or slow the
vision loss you experience.

Questions? Need More Information?

Visit us online at mlerf.org

Vision Screening Program Manager

Tamara Oberbeck

573-777-8554

toberbeck@mlerf.org

Missouri Lions Eye Research
Foundation

404 Portland Street

Columbia, MO 65201



**THANK
YOU**

